

Our Reading Journey - Year 1 Spring 2

Phase 5

Your child will continue to work on Phase 5 during the second half of the spring term. They will continue to work on selecting the correct grapheme to represent a sound in a word and continue to learn to read the tricky words from Phase 5 and the National Curriculum.

Your graphemes and tricky words for this half term:

Week	Grapheme	Tricky Word
Week 7	oy	mind
Week 8	ea (bread)	behind
Week 9	ear (bear)	child
Week 10	nk	wild
Week 11	ore	climb
Week 12	are	most

What can I do?

- Use flashcards to revisit the sounds and tricky words that your child has already being taught. Remember to increase the speed at which you show the cards to improve fluency.
- Ask your child to make or spell words and support them as they figure out how the sound need to be represented.
- Listen to your child read their school reading book each day for at least ten minutes. Frequent practise enables your child to become more fluent.

Reading for pleasure

Sharing books and talking about them with your child at this stage is still so vitaly important for language acquisition and a lifelong love of books. Don't forgot to make regular trips to the library to stock up on new titles!

Questions that you could ask when reading with your child:

Why do you think the character did that?

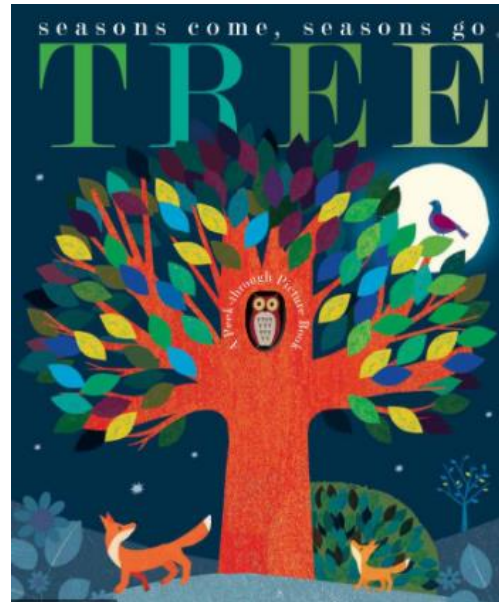
What do you think the character would be thinking at this point?



If you need any further help or information on supporting your child's reading journey, please don't hesitate to ask!

Our Reading Journey - Year 1 Spring 2

Our recommended reads for this half-term:



Why not try to find them at Hemsworth library?

Your child will visit our school library every fortnight and have the opportunity to pick an exciting book to read at home. These books are intended to be read by an adult to encourage a love of reading and expose them to language beyond their reading ability.

If you need any further help or information on supporting your child's reading journey, please don't hesitate to ask!

